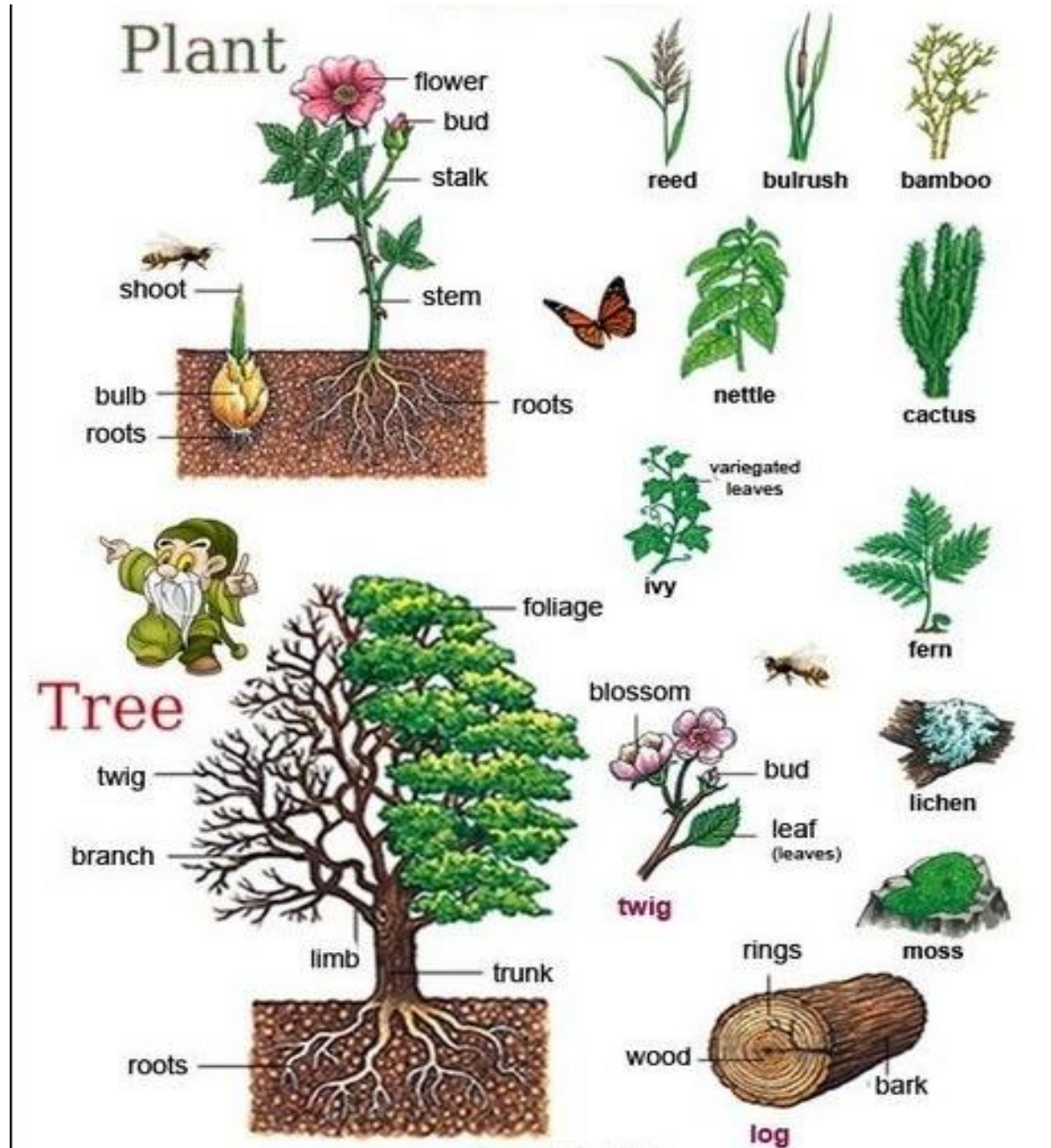
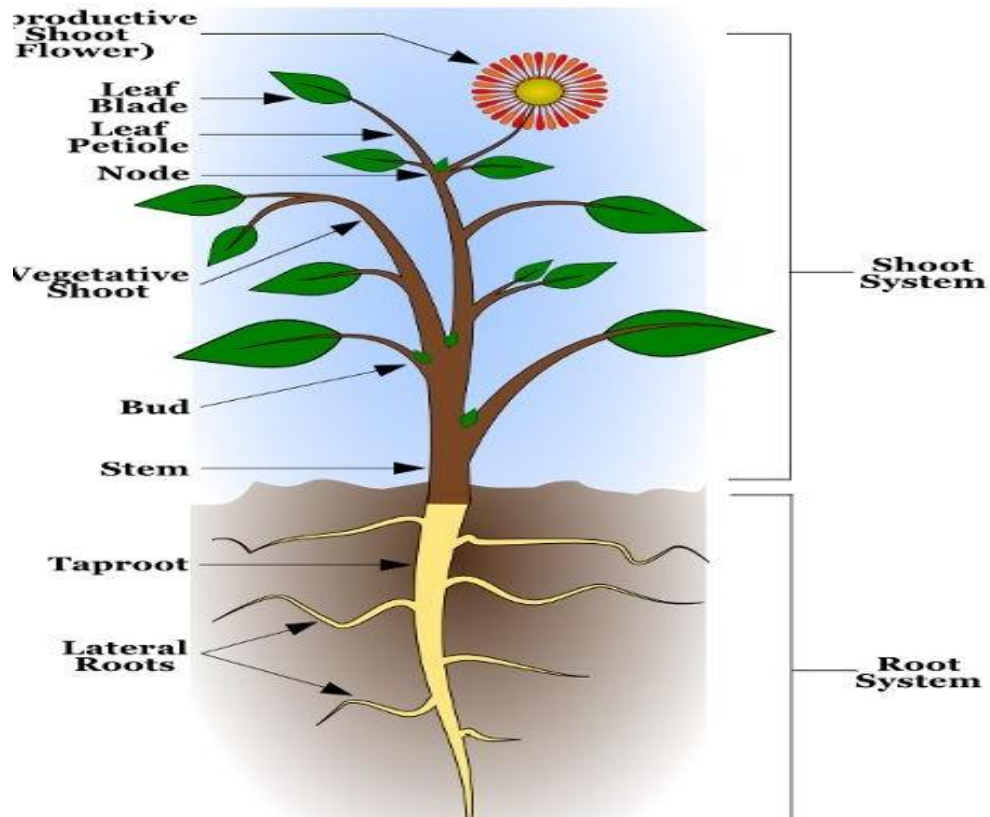


General: -





PLANT SELECTION

TYPES OF PLANT



GRASS



HERBS



SHRUBS



CLIMBING PLANTS



CREEPING PLANTS

Types of plants - Creepers

Creeper plants have soft green stem.
They grow along the ground.



Pumpkin



Watermelon



Muskmelon





broad-headed habit



erect habit



fastigate habit



bushy habit



shrubby habit



nodding habit



spreading habit



wind-shaped



Columnar

Oval

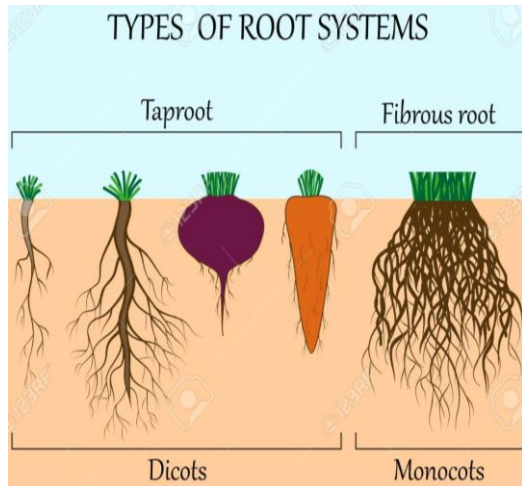
Vase

Weeping

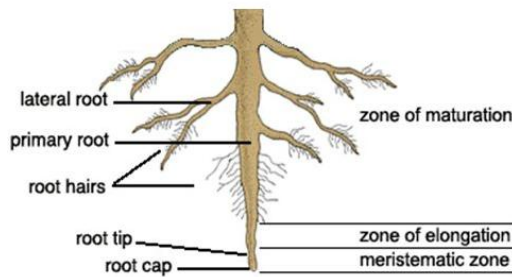
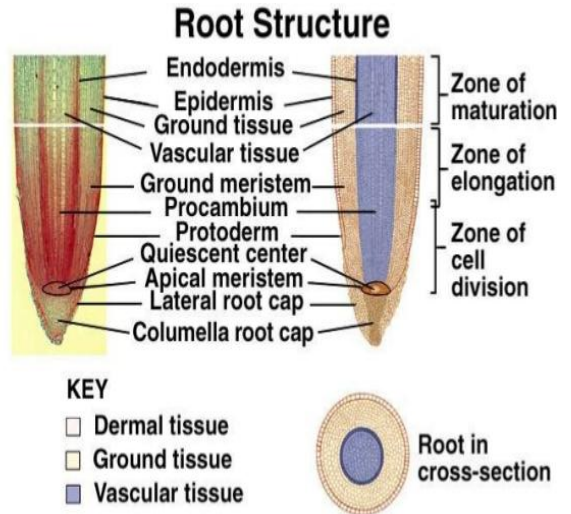
Pyramidal

Round

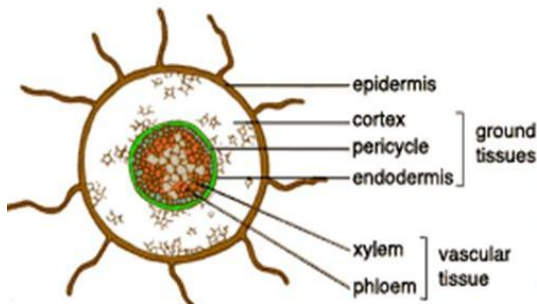
Roots: -



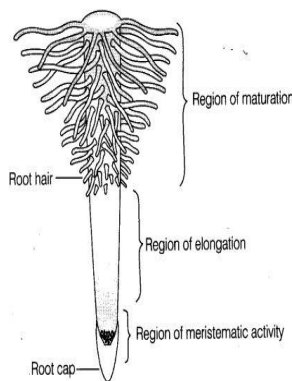
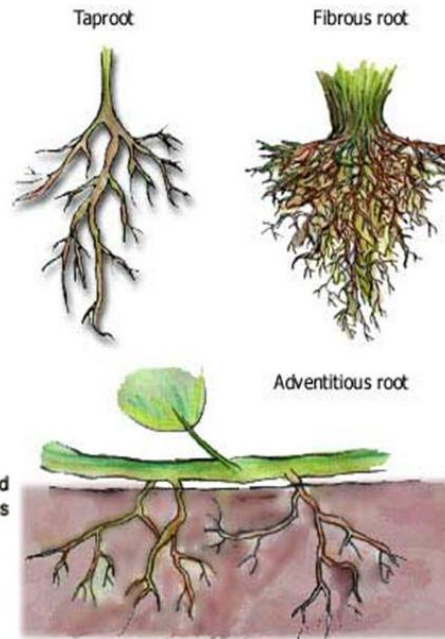
- Anchor the plant
- Absorb water and minerals from soil
- Storage

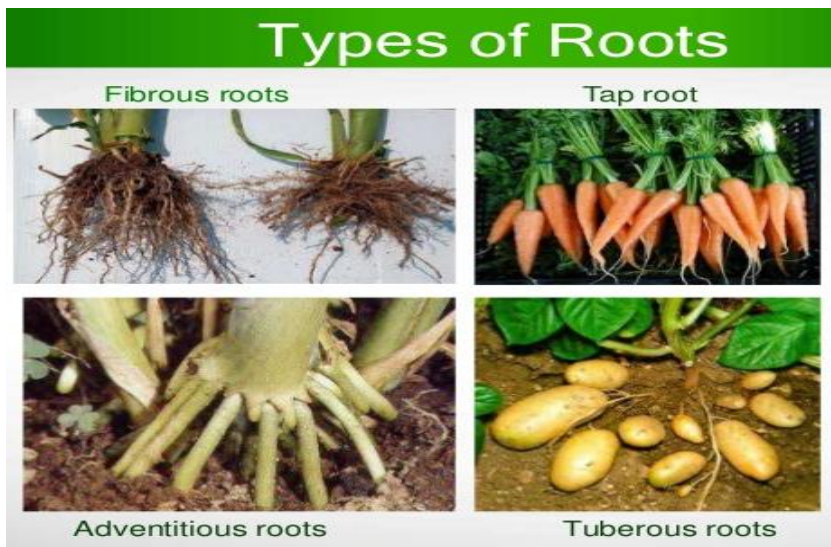
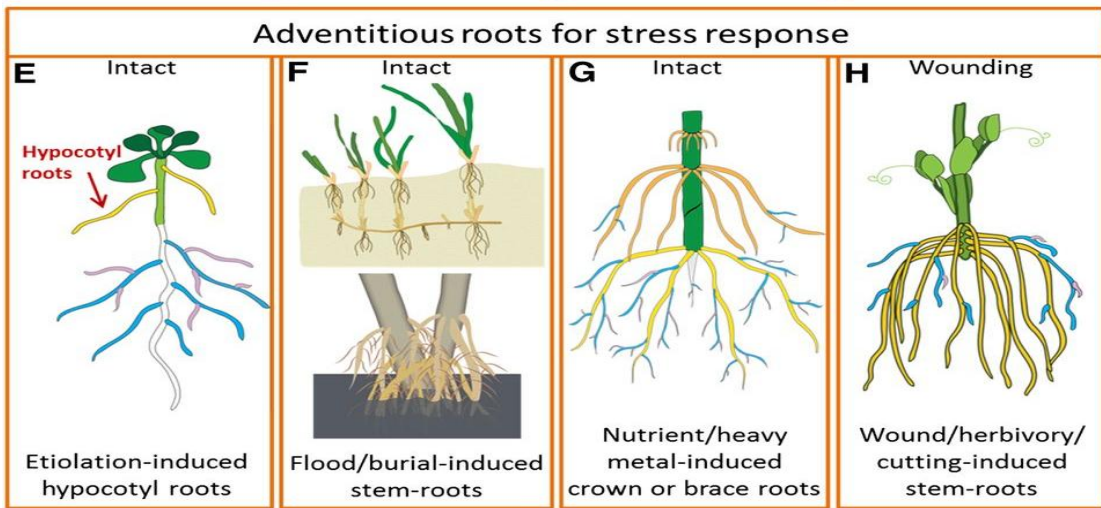
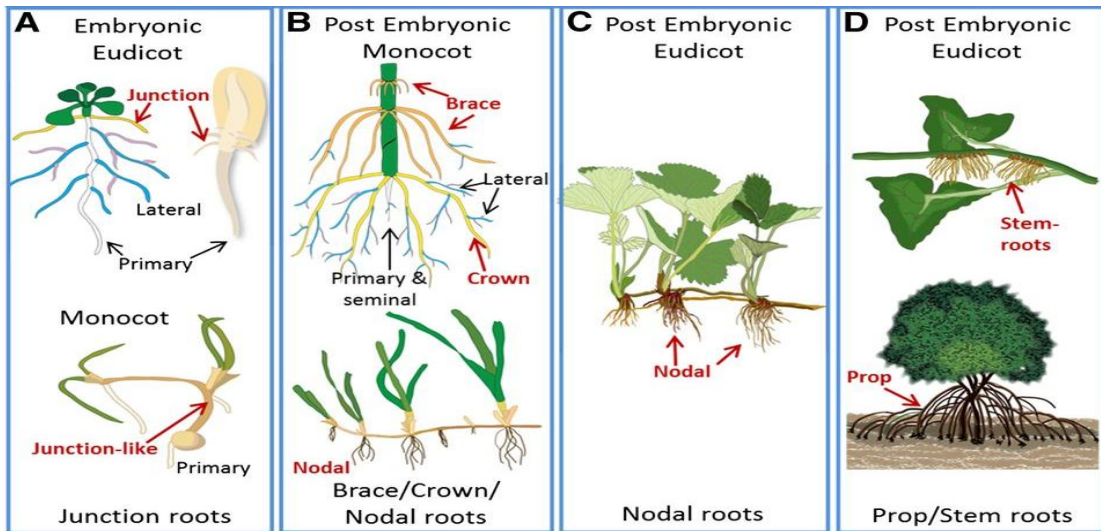


Root - Cross-section

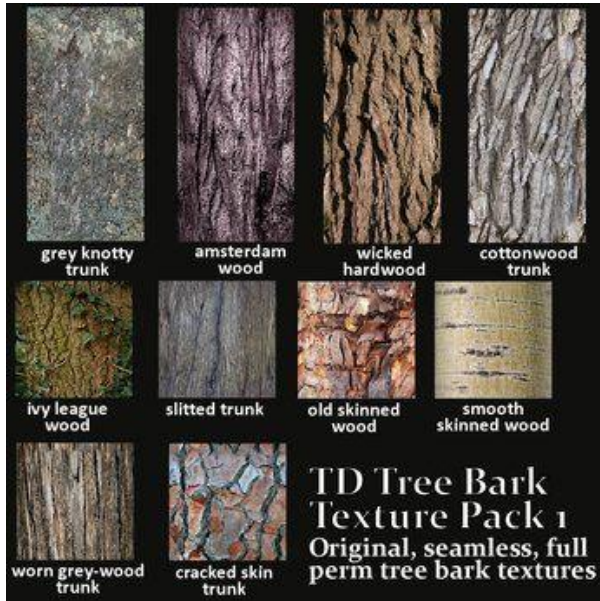


Types of Root Systems

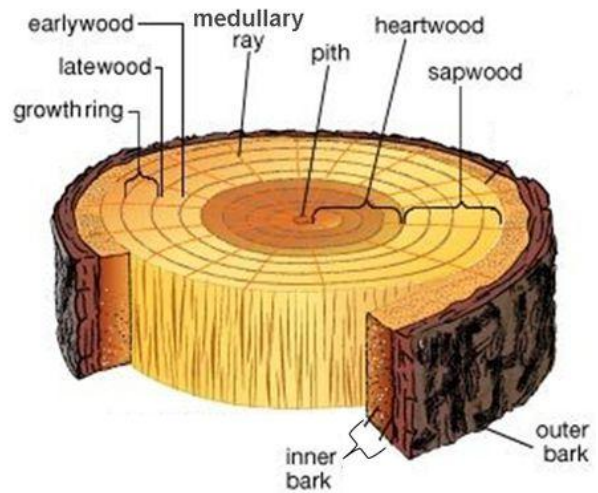
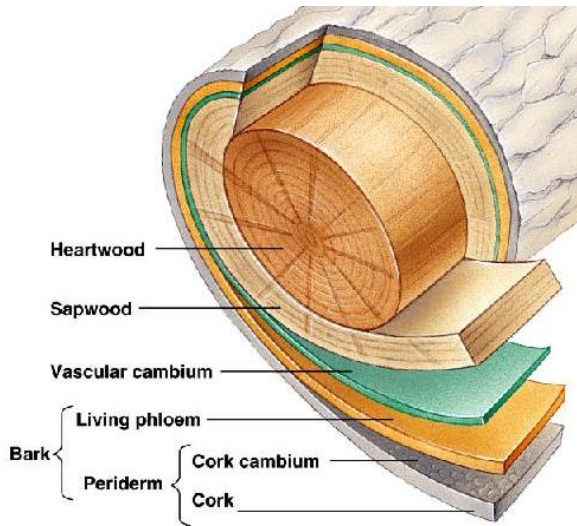
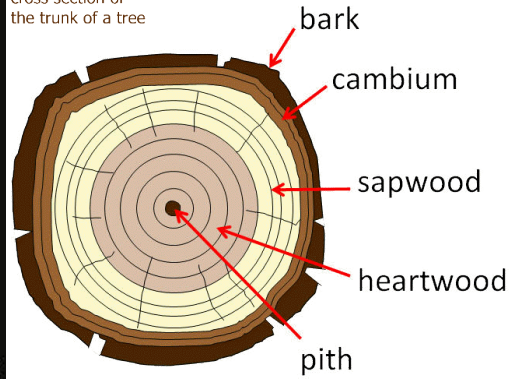




Barks: -



cross section of the trunk of a tree



Stems: -





Ash

Field maple

Birch

Alder

Elder

Hazel

Beech

Horse chestnut

Rowan



Oak

Lime

Lilac

Hawthorn

Blackthorn

Larch

Sycamore

Dog rose

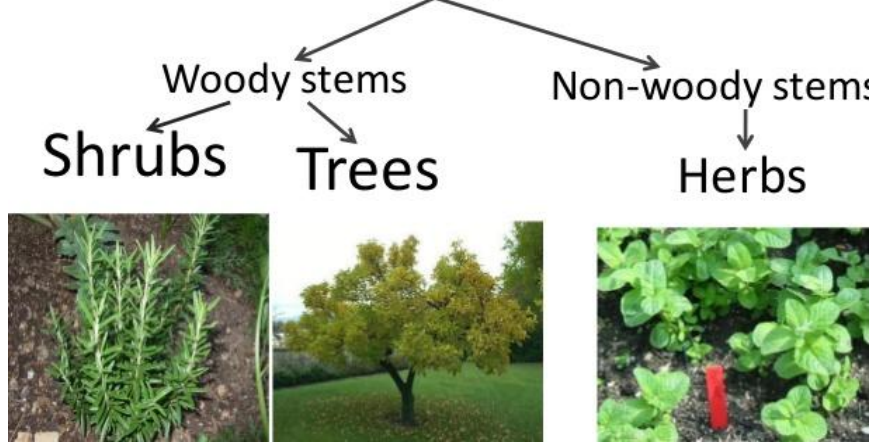
Elm

Types of Stems

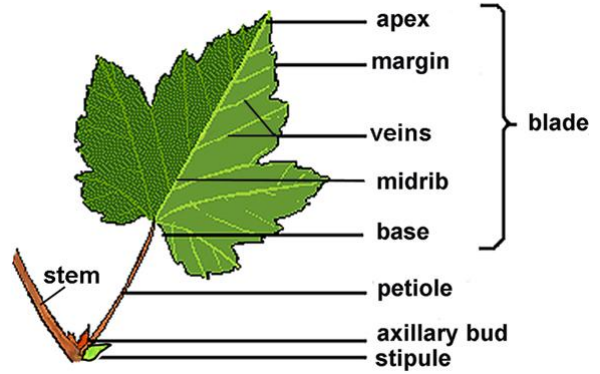
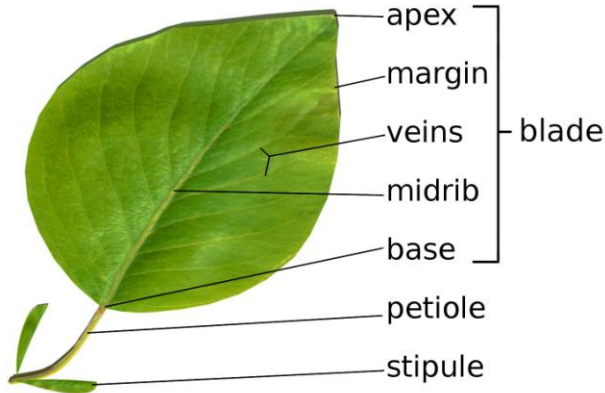


The stem

There are two types of stems:

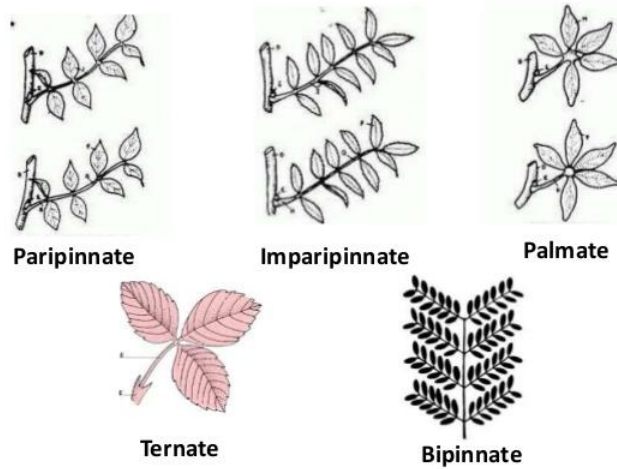
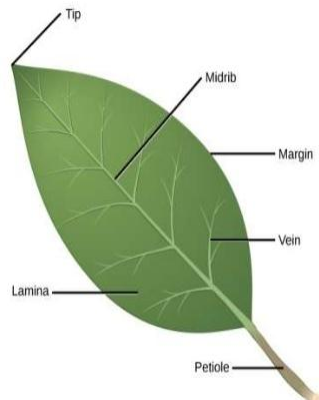


Leaves: -



Parts of typical leaf:

- Blade or lamina
 - Petiolated leaf
 - Sessile leaf
- Midrib
- Stipule
 - Stipulated leaf
 - Ex-stipulated leaf
- Veins



Forms of Compound leaves

SHAPE



Acicular
needle shaped



Elliptic
oval-shaped, small or no point



Obovate
heart-shaped, stem at point



Pinnatisect
deep, opposite lobing



Acuminate
tapering to a long point



Falcate
hooked or sickle shaped



Obovate
egg-shaped, narrow at base



Reniform
kidney-shaped



Aristate
with a spine-like tip



Flabellate
fan shaped



Obtuse
bluntly tipped



Rhomboid
diamond-shaped



Cordate
heart-shaped, stem in cleft



Hastate
triangular with basal lobes



Orbicular
circular



Spatulate
spoon-shaped



Cuneate
wedge shaped, acute base



Lanceolate
pointed at both ends



Ovate
egg-shaped, wide at base



Spear-shaped
pointed, barbed base



Deltoid
triangular



Linear
parallel margins, elongate



Palmate
like a hand with fingers



Subulate
tapering point, awl-shaped



Digitate
with finger-like lobes



Lobed
deeply indented margins



Pedate
palmate, divided lateral lobes



Truncate
squared-off apex

LEAF SHAPES

www.infovisual.info



falcate



orbicular



cochleate



subulate



cuneate



linear



sagittate



hastate



panduriform



lacerate and auriculate



lobate



flabellate



entire



serrated



lobed



undulate



Alternate



Opposite



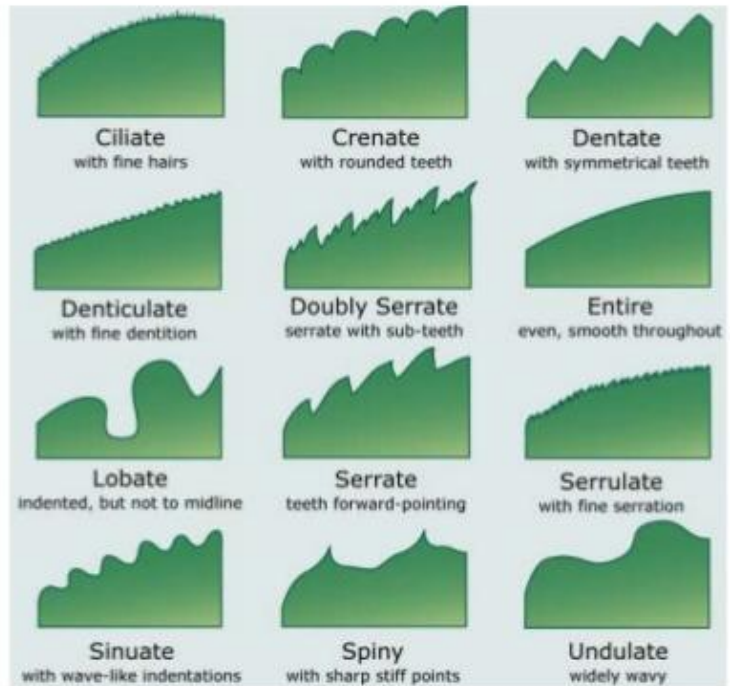
Whorled



Spiral

Margin

(c) Margin or Leaf Edge



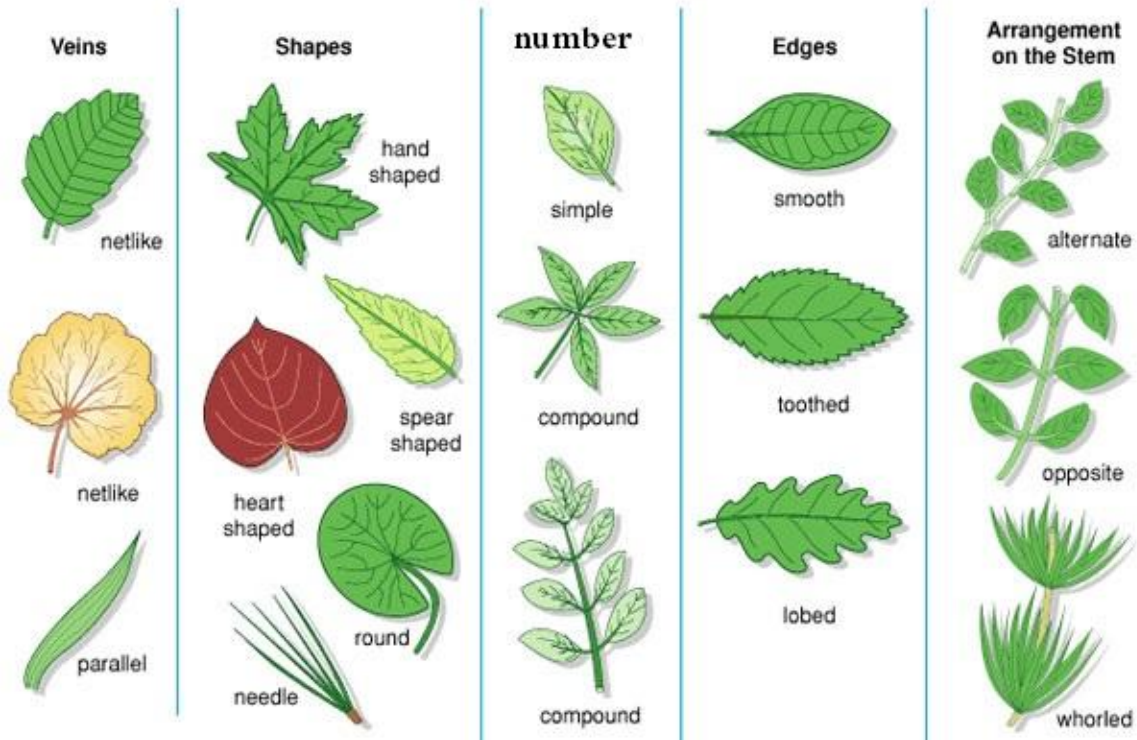
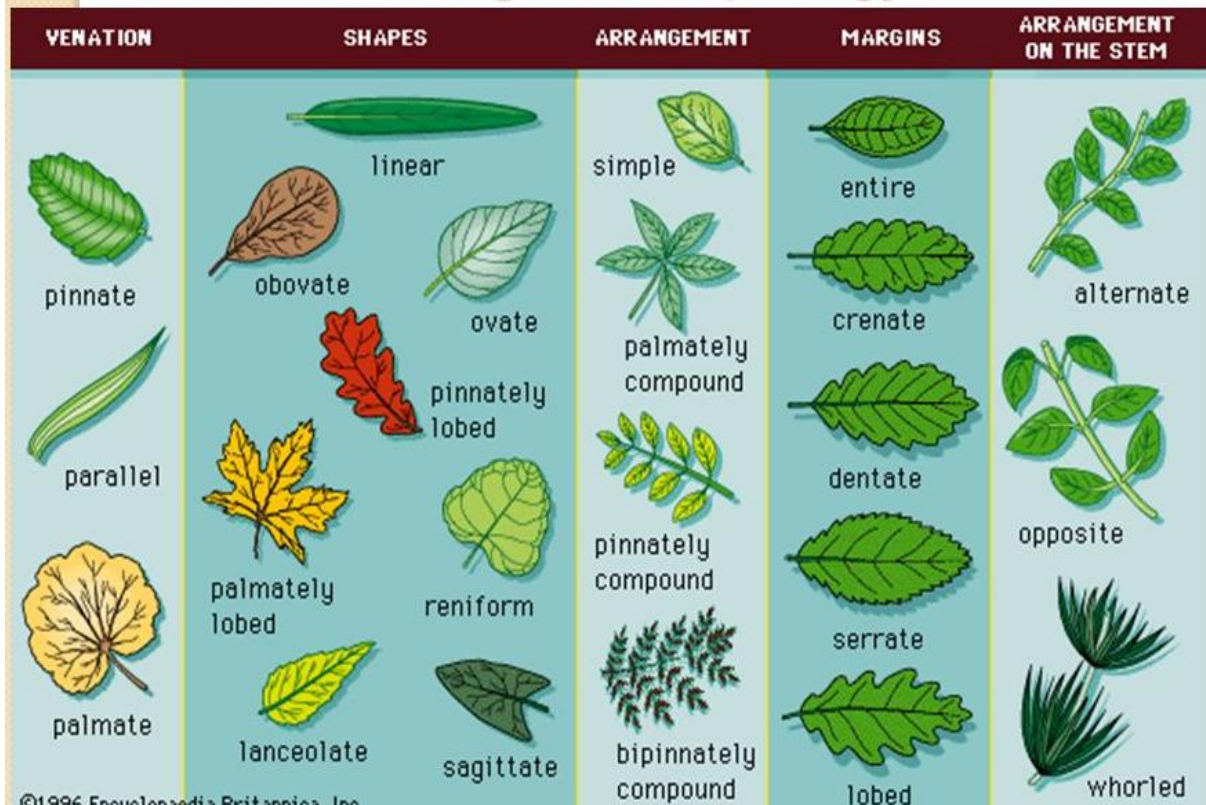
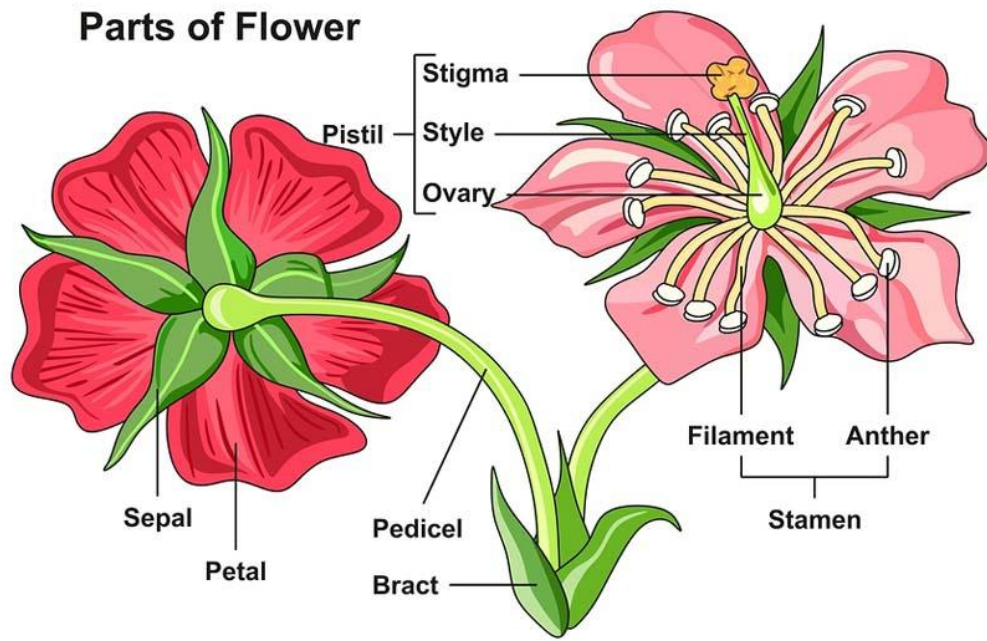


Chart illustrating leaf morphology



Flowers: -



Focal Flowers



Filler Flowers



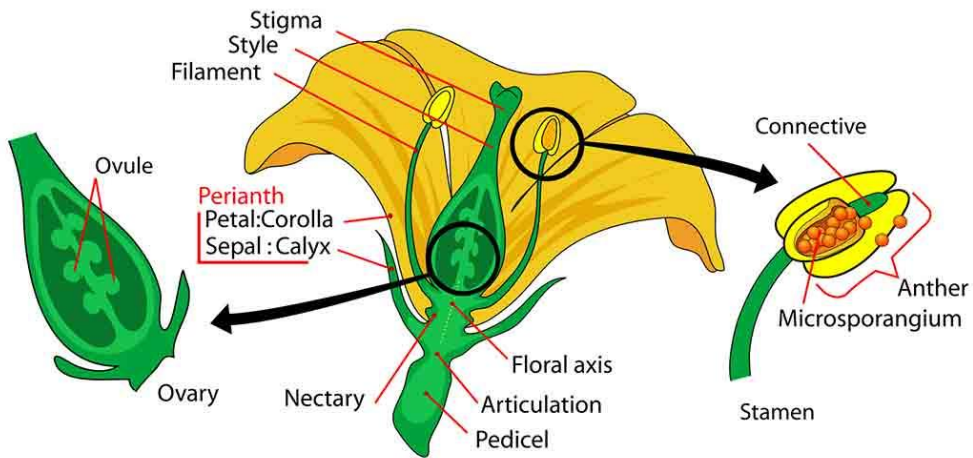
Greenery



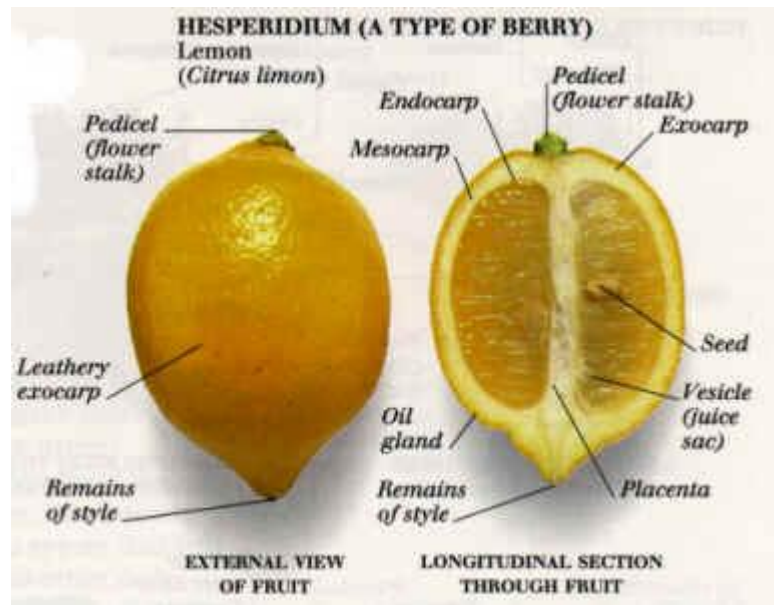
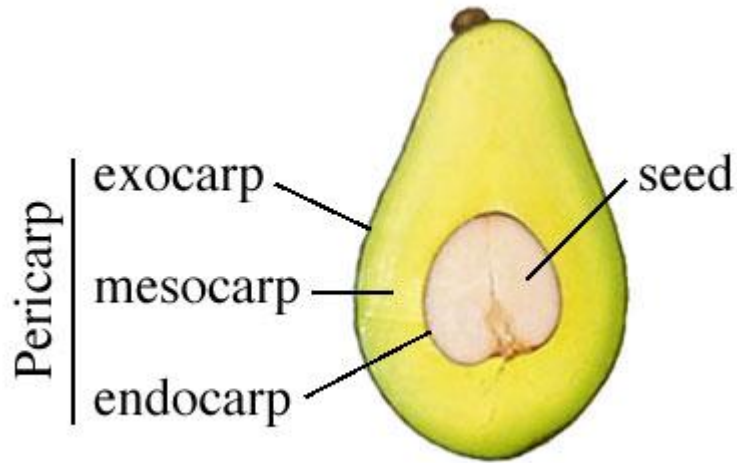
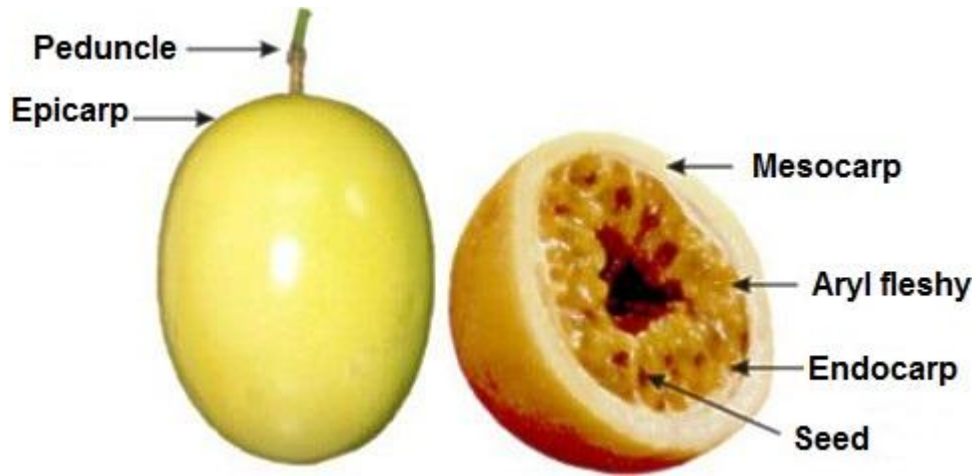
Line Flowers



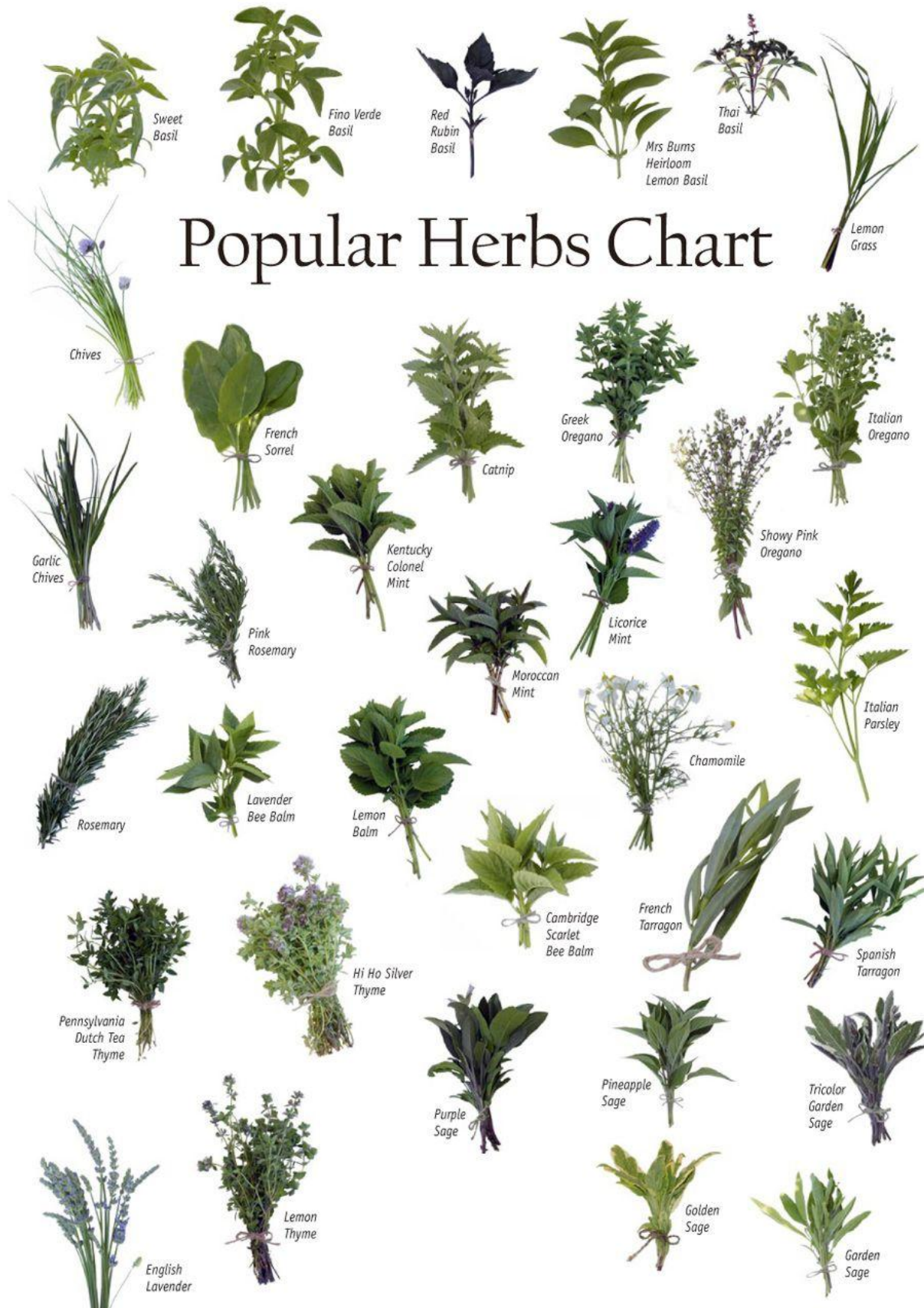
— Morphology of Flowering Plants —



Fruits: -



Herbs: -



Herbs



Mint
Use to garnish sweets
or stir into lemonade.



Bay Leaves
Flavor soups and stews with whole
leaves; remove before serving.



Rosemary
Use whole sprigs to season
a marinade for beef.



Basil
Add to a simmering pasta
sauce just before serving.



Purple Basil
Substitute for green
basil in a pesto sauce.



Oregano
Sprinkle into tomato sauce
destined for a pizza.



Dill
Add a bunch
to homemade
chicken soup.



Cilantro
Kicks up
fresh or
bottled salsa.



Thyme
Combine thyme, salt
and pepper with flour
for dredging poultry.



Tarragon
Stir into mayo with
a bit of lemon zest
for a tangy spread.



Chives
Mash into butter
and melt over
roasted potatoes.



Chervil
Pairs well with scrambled
or baked egg dishes.



Italian Parsley
Mix into bread crumbs as a
coating for chicken or fish.



Sage
The strong flavor stands
up well in sausage dishes.



Marjoram
The fresh, citrusy flavor is
great on chicken or beef.

